

# Home Fire Safety

## FACT SHEET



Tasmania Fire Service

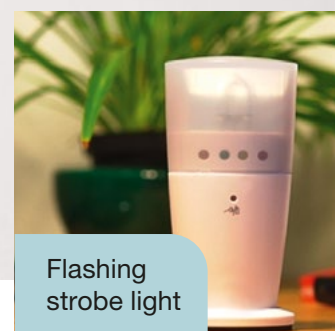


## Smoke alarms for the deaf and hard of hearing.

Smoke alarm packages for the deaf and hard of hearing include all the necessary components to give a person a visual and vibrating alert to a smoke alarm.

The packages usually consist of three parts:

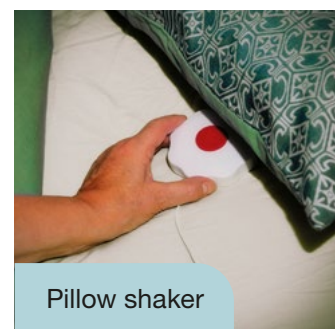
- A flashing strobe light placed beside the bed. It is connected to a power outlet and has a built in rechargeable battery backup.
- A pillow shaker (connected to the strobe light).
- A smoke alarm.



Flashing  
strobe light

When the smoke alarm is activated it sends a radio signal, activating the flashing strobe and the pillow shaker. Note - the smoke alarm still makes loud audible beeps to alert people without a hearing impairment.

**Specialised smoke alarms** are available for people who are deaf or hard of hearing, and can also be linked to personal alarms used by older people or those with disabilities. For more information visit [expression.com.au](http://expression.com.au) or Phone/TTY: 03 6228 1955.



Pillow shaker

**! You may be eligible for a subsidy.**

## Placing smoke alarms



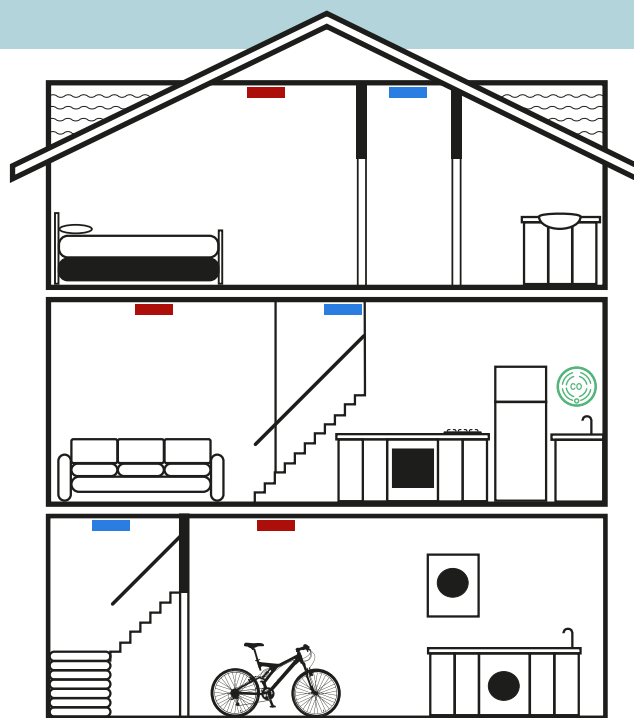
**Required by law:** A smoke alarm in all hallways.  
A smoke alarm at the top of all stairways.



**Tasmania Fire Service recommends:**  
These extra locations.

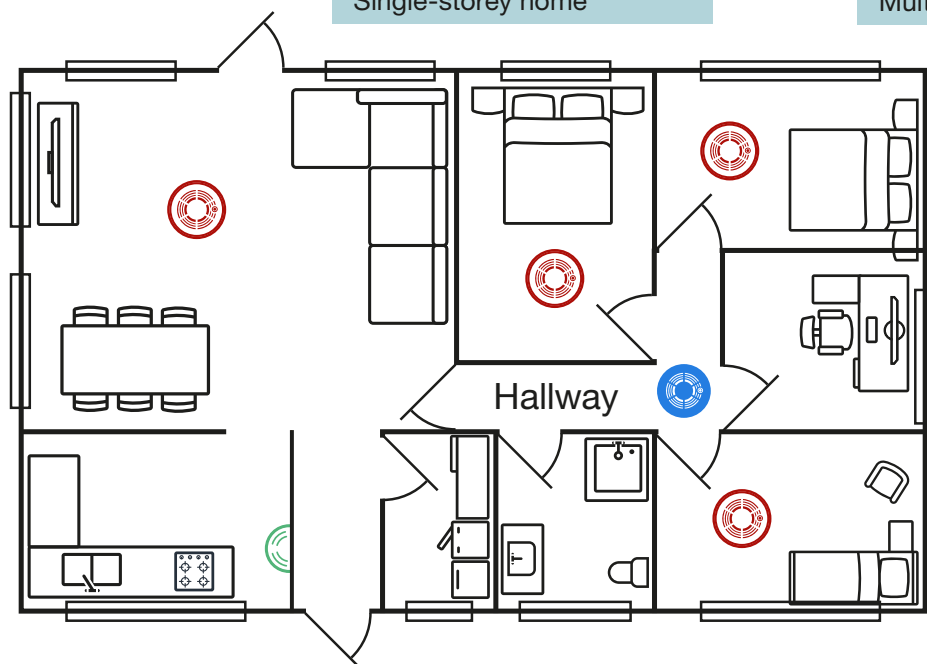


**Tasmania Fire Service recommends:**  
Carbon monoxide alarms for gas appliances  
and wood heaters.



Multi-storey home

Single-storey home



## Hot tips



For older people or people with a disability smoke alarms should be connected to a personal alarm system.



Interconnect smoke alarms so when one goes off they all go off alerting you and your family as quickly as possible if there is a fire.