

Home Fire Safety

FACT SHEET



Tasmania Fire Service

Smoke alarms for the deaf and hard of hearing.

Smoke alarm packages for the deaf and hard of hearing include all the necessary components to give a person a visual and vibrating alert to a smoke alarm.

The packages usually consist of three parts:

- A flashing strobe light placed beside the bed. It is connected to a power outlet and has a built in rechargeable battery backup
- A pillow shaker (connected to the strobe light)
- A smoke alarm.



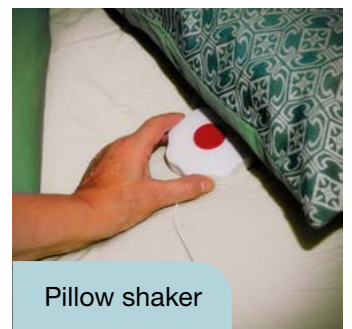
Flashing
strobe light

When the smoke alarm is activated it sends a radio signal, activating the flashing strobe and the pillow shaker. Note - the smoke alarm still makes loud audible beeps to alert people without a hearing impairment.

! You may be eligible for a subsidy.



Access to specialised smoke alarms may be made through Expression Australia. Read our fact sheet for more information or visit expression.com.au/services/smoke-alarm-subsidy






Pillow shaker

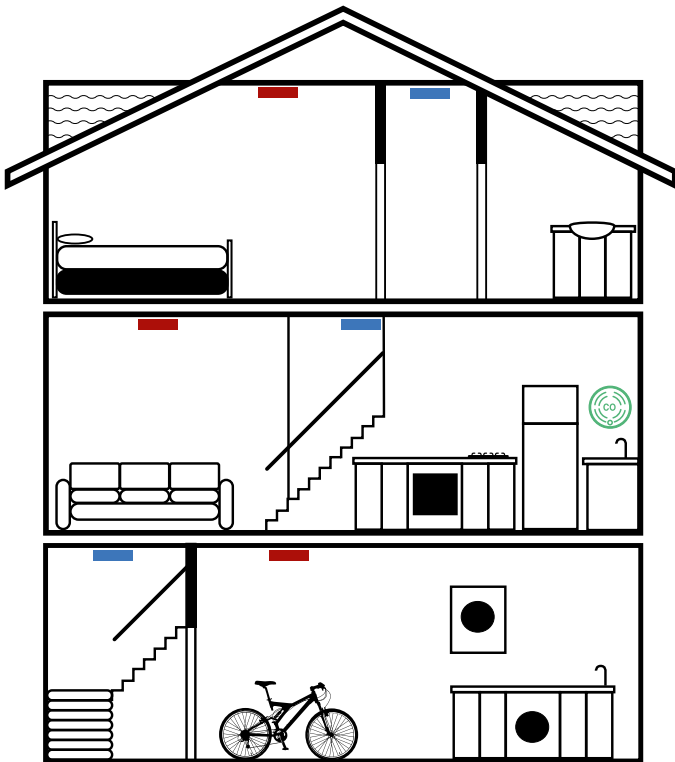


Smoke alarms

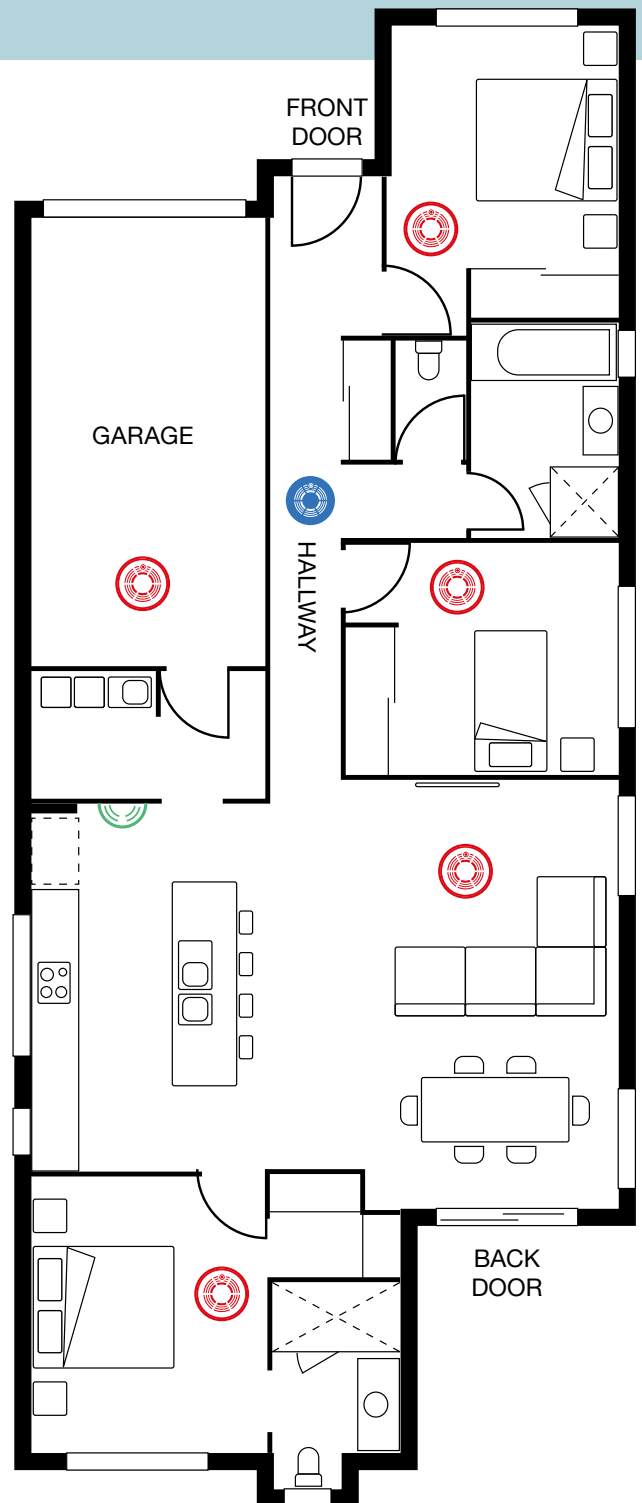
for the deaf and hard of hearing.

Placing smoke alarms

-  **Required by law:** A smoke alarm in all hallways. A smoke alarm at the top of all stairways in multi-storey homes.
-  **Tasmania Fire Service recommends:** Smoke alarms in these extra locations.
-  **Tasmania Fire Service recommends:** Carbon monoxide alarms for gas appliances and wood heaters.





Multi-storey home



Single-storey home

Hot tips

-  For older people or people with a disability smoke alarms should be connected to a personal alarm system.
-  Interconnect smoke alarms so when one goes off they all go off alerting you and your family as quickly as possible if there is a fire.